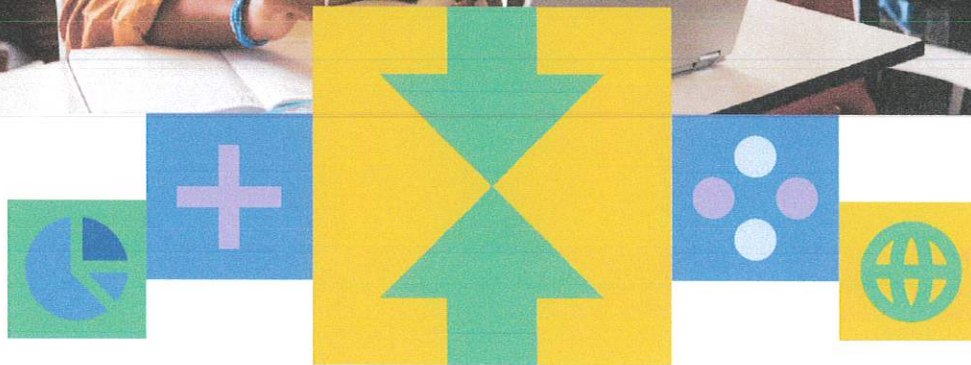


Academic Partnership Plan
Springfield Public School District
186





What We Heard

Carnegie Learning is excited to partner with Springfield Public School on initiatives being emphasized within the IL Empower goals. The proposed activities below outlines the recommended professional development Carnegie Learning will facilitate during the school year 2025/26. This proposal is based upon our recent discussions with the building and team leaders. We were able to gather insights and establish some areas of focus for a professional learning plan. Here's a summary of what we heard, which has informed the following proposal.

The focus of our support will include:

- planning for the delivery of an impactful math lesson an appropriate pacing
- integrating more consistent opportunities to integrate student discourse during daily instruction
- providing consistent scaffolding strategies
- utilizing the tools available to best address the needs of all learners and provide differentiated instruction



Proposed Activities

Providing Strategic Support

Carnegie Learning's professional learning experiences are designed to equip educators with the knowledge, strategies, and confidence needed to engage students in math instruction that enhances student discourse, provides equitable access to the mathematics and supports teachers as they improve their pedagogical strategies. Through hands-on, research-based learning, participants will build a community environment, deepen their knowledge of cross curricular integration, deepen their conceptual understanding of mathematics, strengthen instructional practices, and develop the skills necessary to foster student-centered, collaborative classrooms.

The following professional learning activities provide targeted support for teachers, instructional coaches, and leaders. Each session is designed to be interactive, practical, and immediately applicable, empowering educators to drive meaningful student learning and long-term success.

This comprehensive professional learning proposal outlines a full recommendation of professional learning activities designed specifically for Springfield PSD 186 - IL Empower schools with these goals in mind:

- encourage and foster research-based best practices in math instruction,
- and, ultimately, increase student proficiency in mathematics across the district.

Onsite Coaching & Support

Carnegie Learning's Job-Embedded Coaching & Support provides onsite coaching that meets teachers where they are, offering real-time, side-by-side guidance to ensure a strong and confident implementation of their core resource with an emphasis on Priority Standards. Our expert coaches work hand-in-hand with educators to reinforce instructional best practices, enhance lesson delivery, and support student-centered, collaborative learning environments.

During these coaching sessions, our experienced coaches could provide any of the following supports:

- **1:1 instructional coaching** tailored to teachers' needs, offering personalized feedback and actionable strategies.
- Implementation fidelity support, ensuring that Carnegie Learning resources are used effectively to maximize student impact.
- **Collaborative lesson planning**, helping teachers refine instructional approaches and integrate best practices.
- Demonstration & co-facilitation cycles, modeling instructional strategies and supporting teachers as they implement them.
- **Data-informed instruction**, assisting schools in analyzing student performance data to drive continuous improvement.
- **PLC facilitation**, guiding grade-level teams and instructional coaches in professional learning communities to strengthen instructional alignment.

This flexible, needs-based approach ensures that teachers receive the right support at the right time, helping them build confidence, refine their practice, and create meaningful learning experiences for their students—whether through onsite visits or virtual coaching sessions.

Teacher Workshops

Up to 25 participants

These workshops can be facilitated by our Manager of School Partnerships (MSP) based upon school/teacher pedagogical needs. Some examples of workshop content may include but are not limited to:

- Keys to Teacher Effectiveness
- Creating a Collaborative Classroom
- Implementing the Standards for Mathematical Practice
- Supporting ELL Students in the Carnegie Learning Classroom
- Developing Growth Mindset Students
- Formative Assessment Strategies
- Preparing Students for Rigorous Assessments
- Differentiation for Special Populations

Virtual Coaching/Consulting/Office Hours

Individual or small group conversations, up to 1 hour

- Virtual Learning Planning Conversations with Teachers
- Doing the Math Conversations with Teachers
- Assessment Design

Sample Implementation Timeline

Below is a proposed timeline outlining Carnegie Learning support. This serves as a general framework for professional learning and ongoing coaching. The final timeline will be determined based on the final agreed-upon scope of work determined by each IL Empower school, ensuring alignment with Springfield PSD 186 priorities, scheduling needs, and strategic plan goals.

School: Hazel Dell 6		
Timing	Professional Learning Activity	Description
September 2025	Onsite Job-Embedded Coaching and Support <ul style="list-style-type: none"> • In-Classroom Support & Coaching • Workshop sessions • Co-teaching 	Teachers of mathematics will engage with the MSP in any of the activities included in the Onsite Coaching and Support description, depending on the individual needs of that school and teacher. (2 days)
October 2025	Onsite Job-Embedded Coaching and Support <ul style="list-style-type: none"> • In-Classroom Support & Coaching • Workshop sessions • Co-teaching 	Teachers of mathematics will engage with the MSP in any of the activities included in the Onsite Coaching and Support description, depending on the individual needs of that school and teacher. (2 days)
November 2025	Onsite Job-Embedded Coaching and Support <ul style="list-style-type: none"> • In-Classroom Support & Coaching • Workshop sessions • Co-teaching 	Teachers of mathematics will engage with the MSP in any of the activities included in the Onsite Coaching and Support description, depending on the individual needs of that school and teacher. (2 days)

School: Feitshans		
Timing	Professional Learning Activity	Description
September 2025	Onsite Job-Embedded Coaching and Support <ul style="list-style-type: none"> • In-Classroom Support & Coaching • Workshop sessions • Co-teaching 	Teachers of mathematics will engage with the MSP in any of the activities included in the Onsite Coaching and Support description, depending on the individual needs of that school and teacher. (2 days)
October 2025	Onsite Job-Embedded Coaching and Support	Teachers of mathematics will engage with the MSP in any of the activities

School: Feitshans		
	<ul style="list-style-type: none"> • In-Classroom Support & Coaching • Workshop sessions • Co-teaching 	included in the Onsite Coaching and Support description, depending on the individual needs of that school and teacher. (2 days)
October 2025	Virtual Coaching, Consulting, Office Hours	Teachers of mathematics will have the opportunity to join a virtual office hour where a MSP will facilitate a discussion around any but not limited to the activities listed under Virtual Coaching/Consulting/Office Hours above.

School: Fairview		
Timing	Professional Learning Activity	Description
September 2025	Onsite Job-Embedded Coaching and Support <ul style="list-style-type: none"> • In-Classroom Support & Coaching • Workshop sessions • Co-teaching 	Teachers of mathematics will engage with the MSP in any of the activities included in the Onsite Coaching and Support description, depending on the individual needs of that school and teacher. (2 days)
September 2025	Virtual Coaching, Consulting, Office Hours	Teachers of mathematics will have the opportunity to join a virtual office hour where a MSP will facilitate a discussion around any but not limited to the activities listed under Virtual Coaching/Consulting/Office Hours above. (1 hour)
October 2025	Onsite Job-Embedded Coaching and Support <ul style="list-style-type: none"> • In-Classroom Support & Coaching • Workshop sessions • Co-teaching 	Teachers of mathematics will engage with the MSP in any of the activities included in the Onsite Coaching and Support description, depending on the individual needs of that school and teacher. (2 days)
October 2025	Virtual Coaching, Consulting, Office Hours	Teachers of mathematics will have the opportunity to join a virtual office hour where a MSP will facilitate a discussion around any but not limited to the activities listed under Virtual Coaching/Consulting/Office Hours above. (1 hour)
November 2025	Onsite Job-Embedded Coaching and	Teachers of mathematics will engage

School: Fairview		
	Support <ul style="list-style-type: none"> • In-Classroom Support & Coaching • Workshop sessions • Co-teaching 	with the MSP in any of the activities included in the Onsite Coaching and Support description, depending on the individual needs of that school and teacher. (2 days)
November 2025	Virtual Coaching, Consulting, Office Hours	Teachers of mathematics will have the opportunity to join a virtual office hour where a MSP will facilitate a discussion around any but not limited to the activities listed under Virtual Coaching/Consulting/Office Hours above. (1 hour)
December 2025	Onsite Job-Embedded Coaching and Support <ul style="list-style-type: none"> • In-Classroom Support & Coaching • Workshop sessions • Co-teaching 	Teachers of mathematics will engage with the MSP in any of the activities included in the Onsite Coaching and Support description, depending on the individual needs of that school and teacher. (2 days)
December 2025	Virtual Coaching, Consulting, Office Hours	Teachers of mathematics will have the opportunity to join a virtual office hour where a MSP will facilitate a discussion around any but not limited to the activities listed under Virtual Coaching/Consulting/Office Hours above. (1 hour)
January 2026	Onsite Job-Embedded Coaching and Support <ul style="list-style-type: none"> • In-Classroom Support & Coaching • Workshop sessions • Co-teaching 	Teachers of mathematics will engage with the MSP in any of the activities included in the Onsite Coaching and Support description, depending on the individual needs of that school and teacher. (2 days)



Partnership Team

Zaidy Reyes-Perkins

Account Executive

zreyesperkins@carnegielearning.com

(847)313-8686

Kristine Hobaugh

Senior VP of Professional Learning

khobaugh@carnegielearning.com

(724) 433-1235

Cristin Delaney

Regional VP of Sales

cdelaney@carnegielearning.com

(978) 289-2221

Traci Phillips-Roach

Director of Professional Learning

tphillipsroach@carnegielearning.com

(304) 203-5897



4 Smithfield St, 8th Floor
Pittsburgh, PA 15222
(888) 851-7094
Send Payment to: PO Box 646003, Pittsburgh, PA 15264
salesupportmailbox@carnegielearning.com

QUOTE NO- Q-59224

DATE: 4/15/2025
EXPIRES ON: 8/31/2025

CONTACT INFORMATION		
Springfield Public School District 186 3063 Fiat Avenue Springfield, IL, 62704	Rene Johnson Mathematics Director 217-525-3085 rjohnson@sps186.org	Zaidy Reyes-Perkins Account Executive (847) 313-8686 zreyesperkins@carnegielearning.com

Hazel Dell - Professional Learning (IL Empower Pricing)

ITEM	DESCRIPTION	TERM	UNITS	NET TOTAL
PL MATH Onsite Coaching & Support	Onsite Job-Embedded In-Classroom Support, Coaching, Consulting per day		6	USD 19,800.00
Hazel Dell - Professional Learning (IL Empower Pricing) TOTAL:				USD 19,800.00

Feitshans - Professional Learning (IL Empower Pricing)

ITEM	DESCRIPTION	TERM	UNITS	NET TOTAL
PL MATH Onsite Coaching & Support	Onsite Job-Embedded In-Classroom Support, Coaching, Consulting per day		4	USD 13,200.60
PL MATH Virtual Coaching & Support	Virtual Job-Embedded Coaching, Support, Office Hours, or Consulting (individual or group) per hour		1	USD 500.00
Feitshans - Professional Learning (IL Empower Pricing) TOTAL:				USD 13,700.60

Fairview - Professional Learning (IL Empower Pricing)

ITEM	DESCRIPTION	TERM	UNITS	NET TOTAL
PL MATH Onsite Coaching & Support	Onsite Job-Embedded In-Classroom Support, Coaching, Consulting per day		10	USD 33,000.00
PL MATH Virtual Coaching & Support	Virtual Job-Embedded Coaching, Support, Office Hours, or Consulting (individual or group) per hour		4	USD 2,000.00
Fairview - Professional Learning (IL Empower Pricing) TOTAL:				USD 35,000.00

SUBTOTAL:	USD 68,500.60
SHIPPING AND HANDLING:	USD 0.00
ESTIMATED SALES TAX:	USD 0.00
TOTAL:	USD 68,500.60

- All credit memos and credit balances that exceed 120 days old will first be applied to any existing balances. After application, any remaining credit balance will be refunded via a check. Carnegie Learning will mail the check to the address on file.

EMC SCHOOL AND MONDO EDUCATION ARE PART OF CARNEGIE LEARNING

4 SMITHFIELD ST, 8TH FLOOR, PITTSBURGH, PA 15222

Phone 888.851.7094 + Fax 412.690.2444 + www.carnegielearning.com



**Agreement for Purchase & Delivery of Professional Services
Between Carnegie Learning Inc. and Springfield Public School District 186**

Carnegie Learning, Inc. is a leading publisher of innovative, research-based curricula for middle school, high school, and post-secondary students. We help students succeed, creating a gateway to graduation and preparing them for 21st century careers.

Partnering with educators for continued success, Carnegie Learning is working side-by-side with hundreds of schools and districts implementing our curricula, and we are dedicated to partnering with you to increase teacher effectiveness and student achievement. As you work with our professional services team, your district will build the capacity you need to raise and sustain student achievement. Our goal is to support your team of teachers, coaches and leaders to obtain the results your students deserve.

This agreement, dated April 28, 2025 is made by and between Carnegie Learning, Inc. (the "Company"), located at Pittsburgh, PA, 15219 and Springfield Public School District 186 (Client").

1. **Services to be provided.** The company will provide professional development services to Client in accordance with the terms and conditions set forth in this Agreement. The specific services to be provided shall be selected and agreed upon jointly by Company and Client, as set forth below,
 - a. Two (2) In-Classroom Coaching Days delivered in September 2025 (Hazell Dell)
 - b. Two (2) In-Classroom Coaching Days delivered in October 2025 (Hazell Dell)
 - c. Two (2) In-Classroom Coaching Days delivered in November 2025 (Hazell Dell)
 - d. Two (2) In-Classroom Coaching Days delivered in September 2025 (Feitshans)
 - e. Two (2) In-Classroom Coaching Days delivered in October 2025 (Feitshans)
 - f. Virtual coaching hour delivered in November 2025 (Feitshans)
 - g. Two (2) In-Classroom Coaching Days delivered in September 2025 (Fairview)
 - h. Virtual coaching hour delivered in September 2025 (Fairview)
 - i. Two (2) In-Classroom Coaching Days delivered in October 2025 (Fairview)
 - j. Virtual coaching hour delivered in October 2025 (Fairview)
 - k. Two (2) In-Classroom Coaching Days delivered in November 2025 (Fairview)
 - l. Virtual coaching hour delivered in November 2025 (Fairview)
 - m. Two (2) In-Classroom Coaching Days delivered in December 2025 (Fairview)
 - n. Virtual coaching hour delivered in December 2025 (Fairview)
 - o. Two (2) In-Classroom Coaching Days delivered in January 2026 (Fairview)
2. **Term of Agreement.** This Agreement will begin on April 28, 2025 and end on March 31, 2026.
3. **Responsibilities of Company.** Services will be rendered according to the agreed upon Terms above. In addition, Company agrees to:
 - a. Provide professional development services that impart Client with the knowledge and tools to meet the goals established in the proposal.
4. **Responsibilities of Client.** Client acknowledges that the value and effectiveness of the services rendered by Company depends largely on the cooperation and participation of Client. Therefore, Client agrees to make reasonable efforts to facilitate the implementation of services agreed to hereunder, including:
 - a. Provide detailed information to Company about desired content and outcomes via the above referenced proposals prior to the delivery of services.
 - b. Together with Company, create an implementation calendar to ensure that dates of service are incorporated into Client's schedule, and that the days are convenient for both parties.



LONG + LIVE + MATH

**Agreement for Purchase & Delivery of Professional Services
Between Carnegie Learning Inc. and Springfield Public School District 186**

- c. Maintain timely communication with Company, and promptly address requests from Company.
- d. Provide a designated contact for professional development visits
- e. Arrange for necessary supplies and location for agreed upon professional development services
- f. Ensure that Client Administration will attend all appropriate onsite professional development sessions, including any status meetings and customized professional development
- g. Provide ongoing feedback regarding the successes and challenges of the partnership.
- 5. **Cancellation of professional development.** Company understands that circumstances sometimes arise which require a change in the scheduled delivery of professional development. There will be no penalty for acts of nature which require postponement of scheduled professional development services; however, in the event that a scheduled service is cancelled, penalties will be applied as follows:
 - a. For any type of onsite professional development where less than 5 business days notice is given Company may assess, at its sole discretion, a cancellation fee equivalent to the cost of the cancelled professional development.
 - b. For live online professional development where less than 24 hours notice is given Company may assess, at its sole discretion, a cancellation fee equivalent to the cost of the cancelled session.
- 6. **Contracting outside Company Agreement.** Contracting with any Company employee or assign independently is forbidden.
- 7. **Amendments.** The parties acknowledge that the specific services to be provided under this agreement are subject to ongoing conversation, review and adjustment as the school year progresses and as implementation needs warrant; therefore, this agreement may be amended, provided that changes are made in writing and signed by authorized representatives from both parties. Any such amendments are considered part of this agreement.
- 8. **Payment and Terms.**
 - a. Payment is due net thirty days from date of invoice. The total amount in services rendered under this agreement is \$68,500.60.
 - b. The Company will invoice the Client in full upon receipt of this signed agreement, based on this contract for the amounts and terms above.

Carnegie Learning Account Executive: Zaidy Reyes-Perkins

Carnegie Learning, Inc.
4 Smithfield Street
Pittsburgh PA 15222
Phone 888-851-7094

Bill to: Springfield Public School District
3063 Fiat Avenue
Springfield, IL 62704
Phone 217-525-3085



LONG + LIVE + MATH

Agreement for Purchase & Delivery of Professional Services
Between Carnegie Learning Inc. and Springfield Public School District 186

Signature: Tamara Bousquet

Title: Executive Vice President, Sales

Date: April 28, 2025

Signature: _____

Title: _____

Date: _____

Finance Agent Signature: _____

Title: _____

Date: _____

Phone: _____